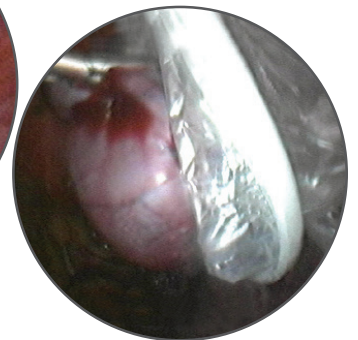


LiNA EndoBag™

Specimen Retrieval Bag
Single use laparoscopic instrument
for 10, 11 or 12 mm trocars



Innovation in Gynecology

LiNA EndoBag™

The patented LiNA EndoBag™ is a single use specimen retrieval bag for 10, 11 or 12 mm trocars, designed to temporarily contain specimen and facilitate their removal from the patient during laparoscopic surgery.

Due to the risk of contamination of the abdominal cavity when a specimen infected by e.g. malignant tumours is removed, the need for a safe and easy-to-use specimen retrieval bag is growing fast in the minimal invasive surgery.

Safety. Tear resistant – double wall pouch

The LiNA EndoBag™ has a double wall pouch, made of a strong tear resistant polyethylene material. If the outer pouch, by accident, is fractured with a sharp needle or an endo-hook during a procedure, the inner pouch remains unharmed and the specimen can be removed.

Impermeable pouch – minimizes risk of contamination of surgical site

Due to the double wall pouch, the LiNA EndoBag™ is impermeable, which means that the bag does not release contaminated specimens. Consequently, the risk of intra abdominal contamination is minimized.

No metal content – minimizes risk of electrosurgical burns

Furthermore, the absence of metal parts in the LiNA EndoBag™ minimizes the risk of electrosurgical burns.

Functionality. Flexible plastic ring opens and closes the bag

The unique construction and flexible plastic ring to which the bag is attached ensures that the LiNA EndoBag™ automatically remains open and makes it easy to place the specimen into the bag. The plastic ring can also be used to “scoop” the specimen into the bag without use of graspers. Furthermore, the bag can be opened completely and closed as many times as needed during the procedure.

Adjustable bag opening size

Due to the construction of the ring, the surgeon can enlarge or minimize bag opening depending on the needs during the use.

Versatility. Open the bag outside the abdomen

The LiNA EndoBag™ pouch can be opened during the removal phase as opposed to bags that are closed completely by a string. The extra feature enables the surgeon to open up the bag again, while the plastic ring with the top of the pouch is “outside” and the rest of the pouch is still “inside” the abdomen.

Remove liquid in the bag with a suction device and remove some of the specimens one by one by using a grasper. The bag with the remaining specimens can then easily be removed from the abdomen by pulling the bag. This feature minimizes the need for making extra incisions in the fascia during the removal phase.

Re-use several times for the same patient

Due to the unique construction of the LiNA EndoBag™, the bag can be reused several times for the same patient e.g. for removal of both ovarian tubes. Simply fold the pouch and cover it carefully again with the white protection tube. The LiNA EndoBag™ is now ready for use again.

Available in 2 sizes – 60 & 100 mm diameter

The LiNA EndoBag™ is available in two different pouch sizes. Choose either the EB-60 with 60 mm pouch diameter, 141 mm pouch length and a total volume of approximately 110 ml or the large EB-100 with a 100 mm pouch diameter, 174 mm pouch length and a total volume of approximately 410 ml. With these two sizes most needs in minimal invasive surgery are covered.

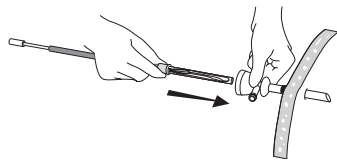
The LiNA EndoBag™ specimen pouch is ideal for removal of tissue specimens such as:

- Gall bladders & stones
- Appendices
- Ectopic pregnancies
- Lymph nodes
- Myomas
- Ovaries
- Omentum
- Sections of bowel
- And other similar structures

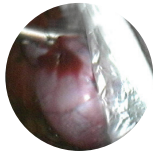
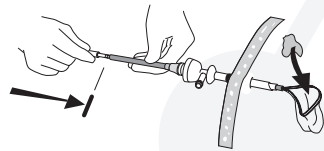


LiNA EndoBag™

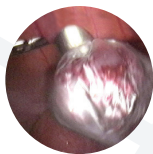
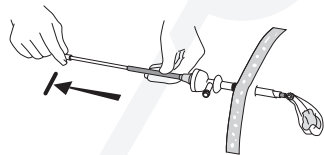
The LiNA EndoBag™ is inserted into the abdomen through the trocar cannula. The bag is opened by pushing the transparent handle.



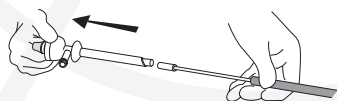
Specimen is loaded into the bag with a grasper.



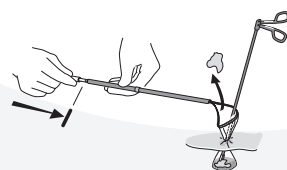
The bag is closed completely and pulled back as far as possible to the abdomen wall.



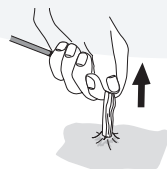
The Trocar is now removed together with the white protection tube.



The bag can be opened "outside" the abdomen, while a part of the pouch is still "inside". Specimen can then be removed with a grasper and liquid with a suction device.



The bag can thereafter easily be closed again and pulled out



Ordering Information:

LiNA EndoBag™ **CE**
0459

REF.	Product	UOM
EB-60	LiNA EndoBag™ - Tissue Retrieval System for 10,11,12 mm trocars. 60 x 141 mm – Volume approx. 110 ml. Sterile, single use.	Box of 10 ea
EB-100	LiNA EndoBag™ - Tissue Retrieval System for 10,11,12 mm trocars. 100 x 174 mm – Volume approx. 410 ml. Sterile, single use.	Box of 10 ea

Distributor:

©2020 LiNA Medical ApS. All rights reserved.
LiNA is a registered trademark of LiNA Medical in EU, US and CN.

LiNA Medical ApS

• Formervangen 5
DK-2600 Glostrup
Denmark

• Tel.: +45 43 29 66 66
Fax: +45 43 29 66 99
info@lina-medical.com

• www.lina-medical.com
CVR: 10054974

Quality Management System
EN ISO13485:2016

